

herbalAire H2.1 – Operating Manual

READ AND SAVE THESE INSTRUCTIONS

Congratulations on purchasing your new herbalAire H2.1



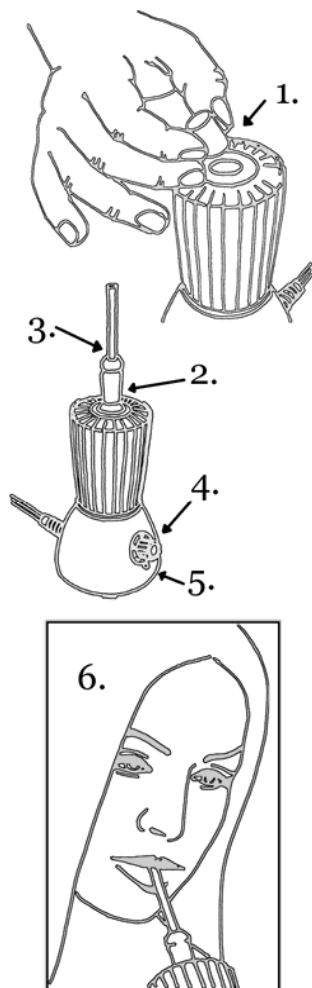
Features

- Temperature Control board – set temperatures between 250F-400F or 125C-200C
- Tri-Colored Temperature Light – indicates when desired temperatures have been reached
- Automatic shutdown – after 30 minutes of non use
- Dual functionality – use as direct inhalation unit OR connect the pump to fill bags with cool potent vapor
- 12 ft cord
- Durable safe hi-tech materials. Teflon mouthpiece. Exterior is a sophisticated blend of glass and nylon.
- Easy to clean
- Easy to operate

Disclaimers

1. The herbalAire is for people 18 years of age or older. It is the responsibility of the herbalAire customer to understand the laws of his/her country.
2. It is the user's responsibility to research and understand the effects various herbs can have on their body including and not limited to allergic reactions, effects on the circulatory system, psychological effects and their physical ability to do daily activities.
3. The herbalAire is not licensed as a medical device. It is therefore not designed or recommended for use as a medical device.
4. HerbalAire will not assume any liability for injury or damages resulting from use of the HerbalAire not in compliance with the instructions/advisories included in the user manual. It is your responsibility to understand the risks and effects of vaporizing various herbs.
5. This device is not intended for illegal drug use.
6. Studies show, devices like the herbalAire reduce the amount of combusted material entering the lungs, making it an alternative to tobacco smoking. herbalAire is not a smoking cessation device. Tobacco use with the herbalAire still has inherent health risks.
7. It is the responsibility of the herbalAire user to ensure the product is free from any contamination including, but not limited to, viruses, residues that may cause allergic reactions, dirt and debris, bacteria and other pathogens.
8. Our products are provided "As-Is" and are used by you at your own risk.
9. Under no circumstances will herbalAire accept liability for the actions, including loss profits, of the users of this product, even if herbalAire has been advised of these potential losses. At all times and under all circumstances, herbalAire's liability is held to the total amount paid for any product purchased by the customer involved.

Direct Inhalation Set-Up

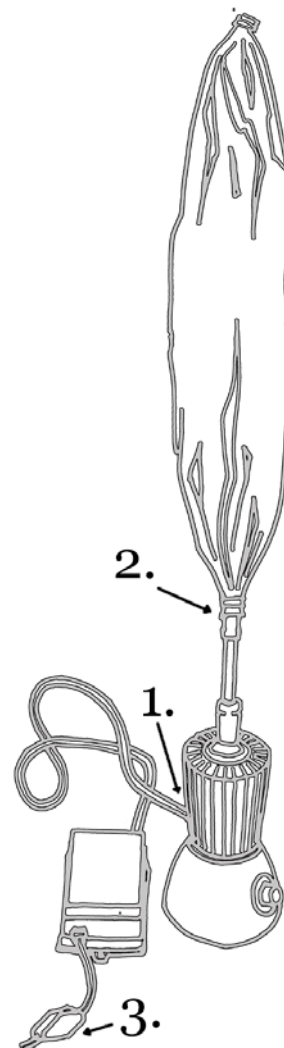


1. Place your herb of choice into the crucible of the herbalAire. Start experimenting with small quantities i.e. one pea sized chunk. **Do not grind the herbs before putting them into the herbalAire.** The herbalAire will vaporize all active ingredients within the herb even those without an exposed surface.
2. Insert the main mouthpiece of the herbalAire. This mouthpiece was designed to fit in easily when the unit is cool. As the herbalAire heats this mouthpiece will fit snugger creating a tight seal.
3. Insert the mouthpiece extensions into the main mouthpiece by inserting and turning the extension until resistance is felt.
4. Plug in the herbalAire and turn the temperature knob to the desired temperature. (Red LED "on" indicator lights glow from under the herbalAire)
5. Watch the tri-colored LED indicate when the desired temperature is achieved. Amber indicates desired temperature has been reached. The light will turn green when the actual temperature is below the selected temperature. (Too cool) The light will turn red when the actual temperature is above the selected temperature. (Too hot)
6. Once the light is amber slowly inhale through the mouthpiece extension. The air will be much smoother than smoking therefore making it important only to inhale half as much as you usually would. Be aware of not covering the back air intake tube with your fingers. Don't be alarmed if the light cycles between the colors as the herbalAire maintains its temperature.

FOR MOST HERBS START IN THE LOW 125C/300F RANGE. HERBALAIRE TECHNOLOGY ALLOWS FOR VAPORIZATION AT THESE REMARKABLY LOW TEMPERATURES. THE VAPOR AT THESE LOWER TEMPERATURES IS OFTEN MORE PURE.

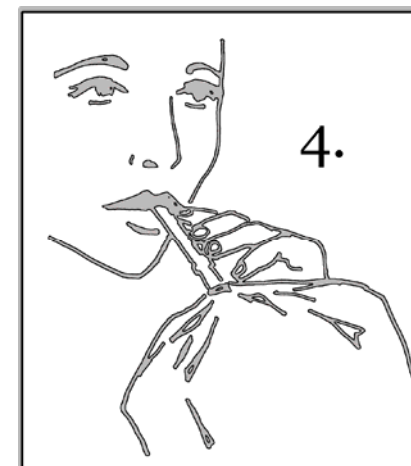
THE HERBALAIRE HAS AN AUTOMATIC SHUTDOWN FEATURE. THE UNIT WILL SHUTDOWN AND BLINK GREEN 30 MINUTES FROM THE LAST TIME THE DIAL IS ADJUSTED. SIMPLY TURN THE DIAL OFF AND BACK ON TO RESET.

Bag Fill Set-Up



First follow the Direct inhalation instructions on the previous page

1. Insert one end of the tubing into the air outlet on the air pump, and the end with the connector into the back hole on the herbalAire.
2. Connect the ready bag mouthpiece onto the end of the mouthpiece extension with a press and twist motion.
3. Turn on the air pump with the switch on the cord.
4. Watch the bag fill with potent vapors. Remove the bag when it is full. Too much filling will cause the bag to burst. As you enjoy the first bag, place the second ready bag onto the herbalAire.



CAUTION – KEEP THE READY BAGS AND ALL HERBALAIRE ACCESSORIES OUT OF REACH OF CHILDREN. SMALL PARTS POSE A CHOKING HAZARD TO SMALL CHILDREN. BAG POSE A POTENTIAL SUFFOCATION HAZARD.

Safeguards

1. To protect against electric shock do not operate the herbalAire around water or other liquids. Never immerse the herbalAire, cord or plug in water or liquids.
2. Never open the herbalAire. Opening the herbalAire unit may cause electric shock.
3. Do not use or leave near children.
4. Unplug from outlet when not in use and before cleaning. Allow time to cool before taking off mouthpieces and before cleaning.
5. Do not operate the herbalAire unit with a damaged cord or plug, or after the appliance malfunctions or has been dropped or damaged in any manner. Contact us for information on repairs.
6. Risk of burn. Large mouthpiece, Top of unit and crucible gets hot where it contacts the unit.
7. Disconnect the herbalAire unit from the socket by pulling the plug and not the cord
8. The use of accessory attachments not supplied by herbalAire may cause injuries and/or void the warranty
9. Do not use in or around humid, damp environments such as hot tubs, bathtubs or saunas.
10. Do not let cord hang over edge of table or counter, or touch hot surfaces.
11. To disconnect, remove plug from wall outlet.
12. Only use the herbalAire for its intended use.
13. Do not leave appliance on unattended.
14. This herbalAire is designed for 110V North America, or 230V power outlets.
15. Care should always be taken since the herbalAire operates between 250F and 400F or 125C-200C.

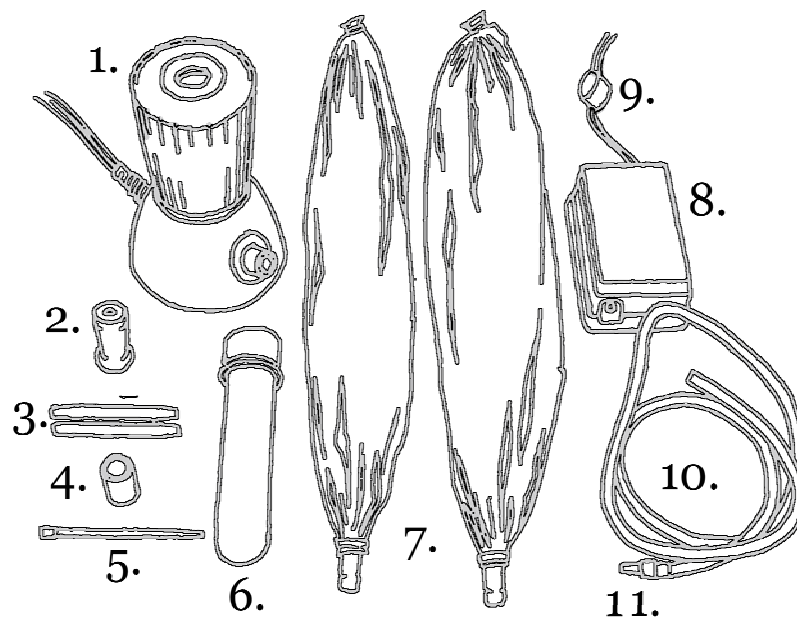
Keep the herbalAire and accessories out of the reach of children. Warning choking hazard. Mouthpieces, tool and herbalAire is not for anyone under 18 years of age.

Using a Power Inverter/12V Car Adapter

- Some inexpensive power inverters are not compatible with the sophisticated temperature control electronics of the herbalAire.
- To determine whether or not you power inverter will work with the herbalAire a simple test can be done.
 1. Plug the herbalAire into your power inverter and turn the temperature to 350F/175C.
 2. Once the temperature is achieved the LED will turn to amber.
 3. When the LED cycles through to red it will cycle back to amber within 30 seconds indicating your power inverter is compatible with the herbalAire. If the LED does not cycle back to amber within 30 seconds the power inverter is not compatible and the herbalAire should be turned off and not used with this power inverter.

Included with the herbalAire H2.1

Make sure you have received the following items in the package. If any of these items are missing or damaged, contact herbalAire at info@herbalaire.com.



1. herbalAire H2.1
2. Main Mouthpiece Teflon
3. Mouthpiece Extensions Teflon
4. Drop In Crucible
5. Cleaning Tool
6. Cleaning/Storage Tube
7. 2 Ready Bags w/ mouthpieces
8. Pump
9. Pump Switch
10. Tubing
11. Connector (fits into back of the herbalAire)

Cleaning the herbalAire

- Ensure the herbalAire is unplugged and has had adequate time to cool.
- To empty the core turn the unit upside down and allow the crucible (if used) to fall out. The crucible can still be hot but it will cool fast. The paddle end of the cleaning tools works well loosen “spent herb”. If required, use a damp cotton or paper towel wrapped around the scraper to wipe the inside of the core. Dampen the towel with water or spirits (ethyl alcohol). Never pour liquids into the core. This could lead to injury and/or voids the warranty.
- Remove the Teflon mouthpieces and rinse with water. Regular dish soap and scrubbing may be required if build up occurs. The cleaning tool provided will fit through the mouthpiece extension. Be careful with the screen inside the mouthpiece and crucible.
- The plastic body of the herbalAire can be cleaned with a damp cloth. Never immerse in water or other liquids.
- Mouthpiece with the screen intact can be cleaned using water or ethyl spirits (ethyl alcohol). We recommend placing the mouthpieces back into the plastic storage/cleaning tube provided along with ethyl spirits, replace the cap, and shake, swirl and tap the container.

ENSURE ADEQUATE TIME TO DRY AND DO NOT OPERATE THE HERBALAIRE AROUND WATER OR OTHER LIQUIDS.

1 Year Warranty

herbalAire warrants this product to be free from defects in material, operation and workmanship for a period of one (1) year from the date of original purchase, unless otherwise noted. This warranty extends only to the original customer (purchaser) and does not cover damage due to abuse, neglect, use for commercial purposes or any other use not found in user manual. herbalAire disclaims any responsibility for consequential damages or incidental losses caused by use of this product. Any attempt to take the herbalAire apart voids this warranty.

Need Help or Information?

Please see our website, www.herbalaire.com or contact us by email at info@herbalaire.com. Please make note of the model and serial number.